

apollo optimus

Hand held Scanner Link

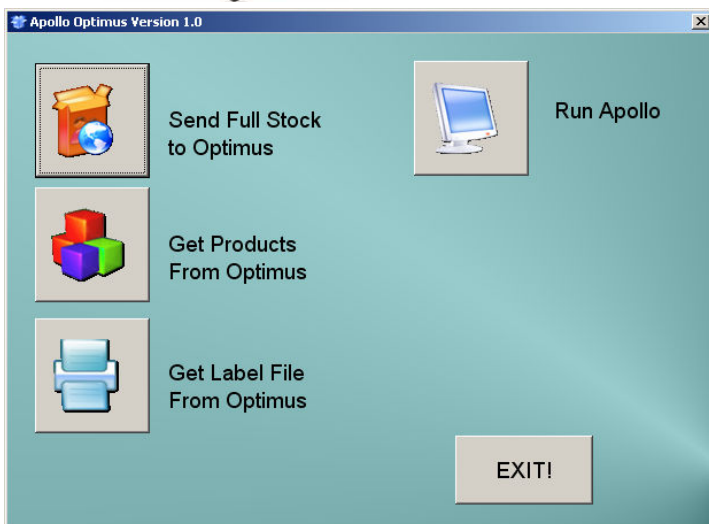
Metrologic's Optimus scanner is a powerful tool to the retailer , but added to Apollo Optimus it becomes far more powerful.

The unit can be used no only to control stock movements but also to control product , labels etc.

- Stock Ordering
- Stock Taking
- Goods Inwards
- Add/Edit Item
- Change Prices
- Request Labels
- Check Prices/Descriptions



The hand held device allows you to roam around your shop , requesting goods to be ordered or simply checking your shelf edge



Request product / shelf edge labels , drop in the cradle and print out. Either A4 or to a bespoke label printer



The simple to use interface links directly with your Apollo stock file , simply drop the Optimus in the cradle click a button or two , and the information is live.

